

EZ Shot™ Product Family





Olympus EndoTherapy

Olympus is committed to providing cutting-edge medical technology that not only helps to improve procedural outcomes and uphold patient satisfaction but also to enhance operational and cost efficiencies. Our mission to help you provide the best care to your patients has driven the quality and value reflected through the performance of each of our endoscopic devices. The unique and broad offerings of Olympus EndoTherapy devices have been instrumental in the development of, and advancements in, the field of endoscopy. Our offerings extend beyond the product sale to provide endoscopy support, enabling you to better care for your patients.





Table of Contents

Portfolio Overview

- Clinical Solutions for EUS Procedures 4
- Product Values 5

EZ Shot™ 3 Plus FNB Needles

- Product Features and Benefits. 7
- Product Specification. 8
- Benchmark Data 9
- Product Order Codes 10

EZ Shot™ 3 FNA Needles

- Product Features and Benefits. 12
- Product Specifications. 13
- Product Order Codes 14



Portfolio Overview

Clinical Solutions for EUS Procedures

Olympus offers a line-up of single-use FNA and FNB needles to help achieve procedural goals for endoscopic ultrasound in a variety of clinical settings. The EZ Shot™ 3 Plus FNB needle is designed to offer enhanced puncturability, predictable trajectory and enhanced echogenicity in 19 G, 22 G, and 25 G configurations.

The EZ Shot™ 3 FNA needle features the same ergonomic handle as the EZ Shot 3 Plus, and is designed for precision sampling of lesions, available in 19 G, 22 G, and 25 G configurations to suit clinical preferences.



EZ Shot™ 3 Plus FNB Needle
5 product configurations



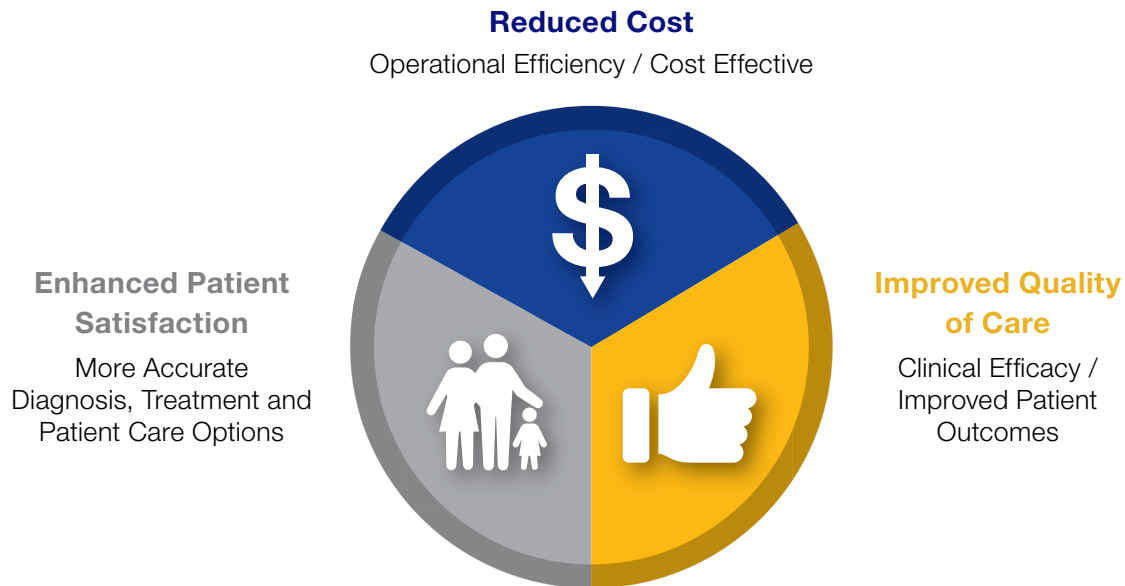
EZ Shot™ 3 FNA Needle
3 product configurations



Portfolio Overview

Product Values

With a continuous effort to adapt to the current health-economic landscape in the U.S. market, Olympus strives to support our customers and patients by addressing the triple aim with each of our products.



EUS Needles

The EZ Shot™ 3 and EZ Shot™ 3 Plus EUS needles offer smooth force transmission from handle to needle and distinct echogenicity for precision sampling of lesions. Both needles are available in 19 G, 22 G and 25 G sizing options to suit physician preferences.

· **Designed to Improve Quality of Care**

- EZ Shot 3 Plus offers access to difficult to reach anatomy such as the uncinate process and right lobe of the liver with larger gauge needles.
- Precise needle deployment enabled by enhanced echogenic needle dimpling and resilient needle shape.

· **Reduced Cost**

- Potentially reduce costs that would otherwise be incurred by the need to switch needles during a procedure due to needle failure.



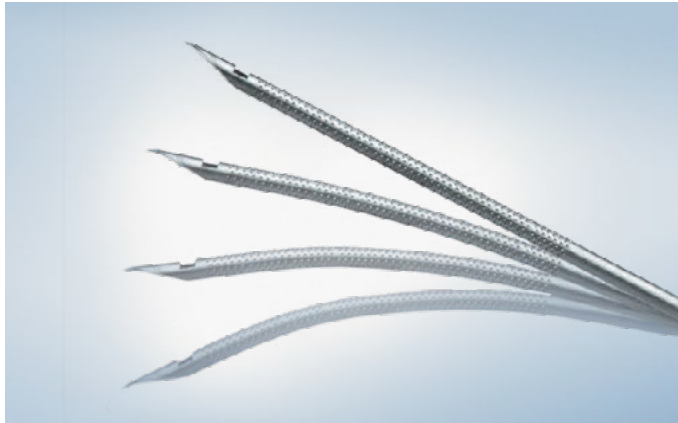
EZ Shot™ 3 Plus FNB Needles





EZ Shot™ 3 Plus FNB Needles

Product Features and Benefits



Reliability

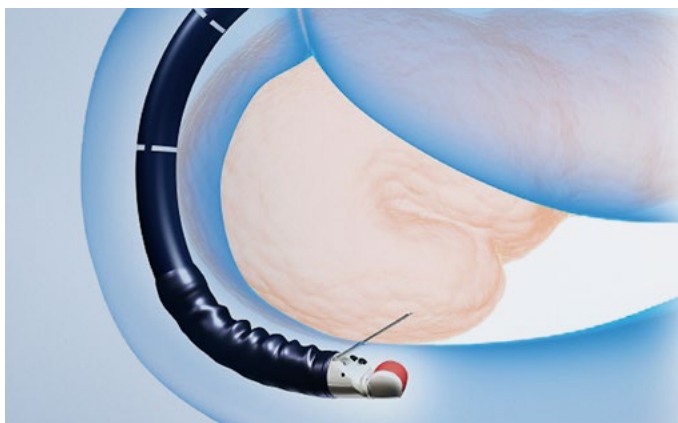
- Resilient nitinol needle* material maintains needle straightness during fanning and multiple passes.¹
- Reliable, straight needle shape after each pass reduces the need to open a second needle due to needle bending.¹
- Rounded distal sheath end supports smooth insertion and reduces damage to the scope working channel.¹

* Does not include 25 G.

Optimal Tissue Sampling

- Menghini tip comprised of a continuous, sharp cutting edge promotes smooth tissue.
- Puncturability to cleanly cut tissue specimens, preserving cellular architecture.¹
- Optional side hole* intended to anchor tissue inside the needle during acquisition.¹

* Not available in 25 G.



Needle Flexibility

- Multi-layer metal coil sheath in all configurations facilitates force transmission from the handle to the needle tip and minimizes friction for smooth delivery¹
- Flexible sheath and needle provide access to lesions in difficult locations including the pancreatic head and right lobe of the liver.

* Data on file at Olympus, as of 6/8/2018.



EZ Shot™ 3 Plus FNB Needles

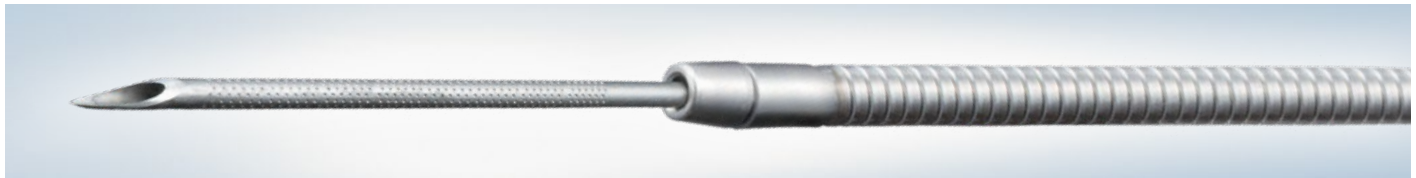
Product Specifications

EZ Shot 3 Plus single-use EUS-guided aspiration needles:

Configurations						
Catalog number	Needle gauge	Needle length (cm)	Working length (cm)	Minimum channel size (mm)	Needle Material	Side hole
NA-U200H-8019	19	8	140	2.8	Nitinol	No
NA-U200H-8019S	19	8	140	2.8	Nitinol	Yes
NA-U200H-8022	22	8	140	2.8	Nitinol	No
NA-U200H-8022S	22	8	140	2.8	Nitinol	Yes
NA-U200H-8025	25	8	140	2.8	Stainless Steel	No

All EZ Shot 3 Plus needles are sold in boxes of five.

- **Single Use/Reusable:** Single-use
- **Sterile/Non-Sterile:** Sterile (ETO Sterilized)
- **Shelf Life:** 36 Months
- **Latex/Latex Free:** Latex Free
- **DEHP/DEHP Free:** DEHP Free



Balanced combination of flexibility and strength.

- Enhanced maneuverability is designed to ensure predictable trajectory with less operating force at any angle.
- Variety of needle sizes for adequate sampling regardless of the lesion location — even the pancreatic head.
- The sharper, flexible design was created with the goal of having the right needle every time, eliminating the need to switch or replace needles.

(Complications from extra-luminal EUS guided FNA and FNB may include, but are not limited to infection, bleeding, perforation, and/or tumor seeding. Extra-luminal fine needle aspiration of cystic lesions has a higher risk of complication from infection and hemorrhage).



EZ Shot™ 3 Plus FNB Needles

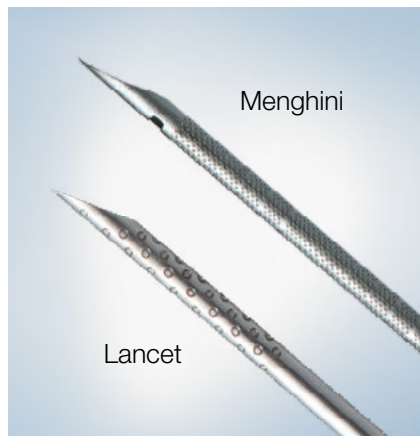
Benchmark Data – Insertion Test Method

- Endoscope head is bent to a 120 degree angle for 22 G and 25 G needle and 90 degrees when testing 19 G needles.
- Needle is passed into working channel of scope and handle is secured to the biopsy port.
- Force required to pass sheath through working channel and across elevator is measured.



Benchmark Data – Puncture Force Test Method

- Endoscope head is bent to a 120 degree angle for 22 G and 25 G needle and 90 degrees when testing 19 G needles.
- Needle sheath is passed into working channel of scope and handle secured to the biopsy port.
- Force to pass needle back and forth is measured.





EZ Shot™ 3 Plus FNB Needles

Benchmark Data – Maximum Elevator Angle Test Method

- Needle sheath is passed into working channel of scope and handle secured to the biopsy port
- Elevator raised to largest angle that allows the needle to be deployed
- Maximum angle that allows needle to deploy is recorded



Product Order Codes

Configurations		
Catalog number	Part number	Description
NA-U200H-8019	N5409330	EZ Shot 3 Plus 19 G Asp Needle 5/bx
NA-U200H-8019S	N5409530	EZ Shot 3 Plus 19 G Asp Needle w/SideHole 5/bx
NA-U200H-8022	N5409730	EZ Shot 3 Plus 22 G Asp Needle 5/bx
NA-U200H-8022S	N5409930	EZ Shot 3 Plus 22 G Asp Needle w/SideHole 5/bx
NA-U200H-8025	N5783830	EZ Shot 3 Plus 25 G Asp Needle 5/bx

Ordering Information

To order EZ Shot 3 Plus, contact your local EndoTherapy Territory Manager.



EZ Shot™ 3 FNA Needles





EZ Shot™ 3 FNA Needles

Product Features and Benefits

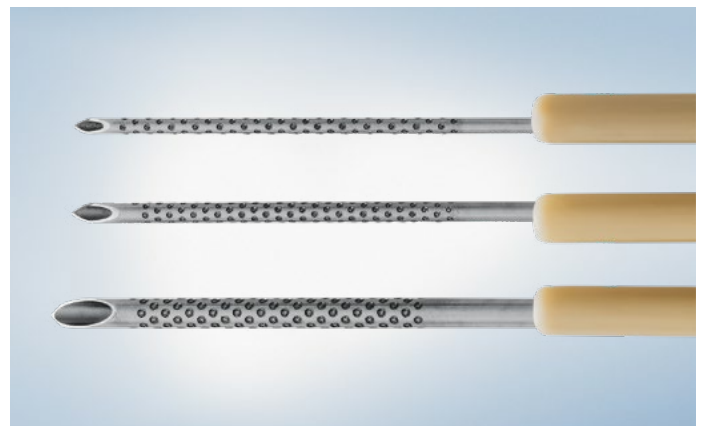


Ergonomic Handle

- The advanced handle is designed to prevent accidental slippage during sampling with anti-slip rubber grips, locking knobs and high contrast labeling, allowing for optimal control of the needle during procedures.

Sampling Precision

- Sharp needle design, adjustable sheath, and luer lock connector are designed for smooth and controlled penetration of the target area for precise sampling of lesions.



Distinct Echogenicity




- Densely arranged needle dimples provide visibility under ultrasound which helps to maintain needle visibility and ensure accurate lesion targeting during sampling.



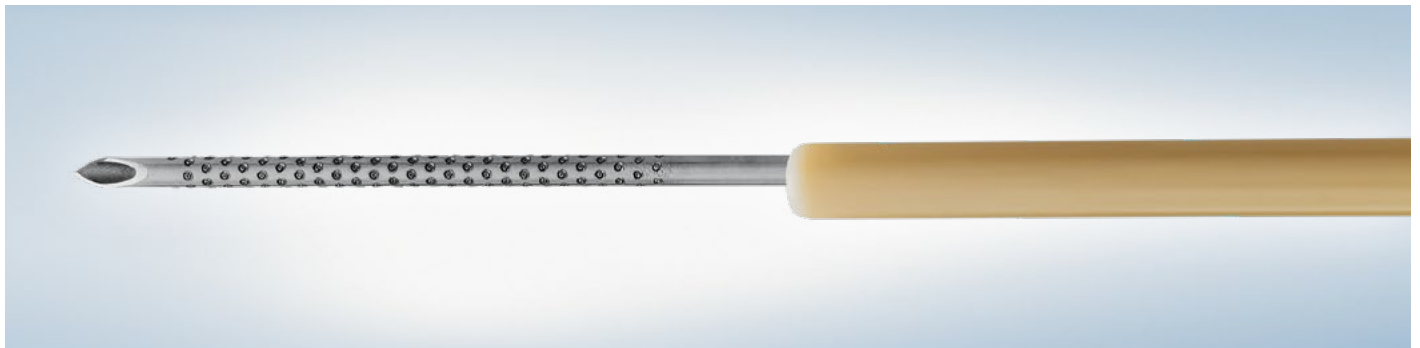
EZ Shot™ 3 FNA Needles

Product Specifications

EZ Shot 3 single-use EUS-guided aspiration needles:

Configurations					
Catalog number	Needle gauge	Needle length (cm)	Working length (cm)	Minimum channel size (mm)	Needle material
NA-U201H-8019	19	8	140	2.8	Stainless Steel 
NA-U201H-8022	22	8	140	2.8	Stainless Steel 
NA-U201H-8025	25	8	140	2.8	Stainless Steel 

- **Single Use/Reusable:** Single-use
- **Sterile/Non-Sterile:** Sterile (ETO Sterilized)
- **Shelf Life:** 36 Months
- **Latex/Latex Free:** Latex Free
- **DEHP/DEHP Free:** DEHP Free



The EZ Shot 3 needles have been designed to be used with an Olympus ultrasound endoscope for ultrasonically guided fine needle aspiration (FNA) of submucosal and extramural lesions within the gastrointestinal tract (i.e. pancreatic masses, mediastinal masses, perirectal masses and lymph nodes).

(Complications from extra-luminal EUS guided FNA and FNB may include, but are not limited to infection, bleeding, perforation, and/or tumor seeding. Extra-luminal fine needle aspiration of cystic lesions has a higher risk of complication from infection and hemorrhage).



EZ Shot™ 3 FNA Needles

Product Order Codes

Configurations		
Catalog number	Part number	Description
NA-U201H-8019	N5784030	EZ Shot 3 19 G Asp Needle 5/bx
NA-U201H-8022	N5784230	EZ Shot 3 22 G Asp Needle 5/bx
NA-U201H-8025	N5784430	EZ Shot 3 25 G Asp Needle 5/bx

Ordering Information

To order EZ Shot 3, contact your local EndoTherapy Territory Manager.



At Olympus our partnership doesn't end after the product is shipped. The point of transition signals a new phase of the relationship we have with our customers: one that is built on the trust and confidence we offer through a dedicated and committed team of support personnel.

We hope this comprehensive overview has been helpful to you in facilitating your decision-making process. If you have any questions or if you would like additional information, please contact your Olympus sales representative.